

PROJECT PLATYPUS



Annual Report 2011 - 12

**PROJECT
PLATYPUS**
UPPER WYAMERA LANDCARE



Project Platypus contact Details:

Telephone: (03) 5358 4410

Fax: (03) 5358 4441

Postal Address: PO Box 838 Stawell 3380

Email: project@platypus.org.au Web: www.platypus.org.au

Project Platypus would like to extend a warm thank you to our sponsors and partners in 2011-2012:



502 Primary school
Stawell West Primary School
Stawell Secondary College
Great Western Primary school
Moyston Primary School
Landsborough Primary School
Skene Street School



CARING
FOR
OUR
COUNTRY



The Upper Wimmera Catchment

The Wimmera River in Western Victoria forms part of the Murray Darling Basin. It is Victoria's largest land locked system and terminates at Lake Hindmarsh and Lake Albury south of the Wyperfeld National Park. The Upper Wimmera Catchment refers to the catchment area upstream of the Mt William Creek and Wimmera River junction encompassing an area of 3,027km².

The main land use in the region is made up mixed farming practices, largely sheep and dryland cropping, but also includes enterprises such as grapes, olives, forestry, vegetable production, cut flowers and other livestock production such as goats, cattle, pigs and poultry. The region is also home to mining industries and boasts a large tourism industry, especially within the Grampians and Pyrenees Ranges. The population of the Upper Wimmera is estimated to be around 15,000 people and is predicted to remain relatively stable into the near future.

The Upper Wimmera has a strong indigenous cultural history and contains many significant sites. Traditional owner groups from the region include the Jardwadjali, Djab Warrung, Djadja Wurrung and the Wotjobaluk People.

The region is home to an extensive array of flora and fauna including a large number of threatened and endangered species. Since European settlement, the region has been subject to significant clearing of native vegetation, which has resulted in numerous environmental issues. These include loss of biodiversity and a degradation of water quality through over-extraction, saline discharge and soil erosion.

Wimmera River Catchment



Project Platypus

Project Platypus was founded in 1994 by Upper Wimmera Catchment Landcare group members who saw the need for a network to deliver larger scale projects across the region. The chosen icon was the platypus as it was identified that much of the network's activity would focus around improving water quality, which in turn would benefit the platypus.

Since its inception Project Platypus has achieved massive results attracting over \$4.5 million to undertake activities such as erosion control work, revegetation, protection of remnant vegetation, establishment of perennial pastures, control of pest plants and animals and raised community awareness of environmental and land management issues.

The success of Project Platypus can be attributed to its community support, its grass-roots approach to problem solving and its ability to relate to land managers and investors. Project Platypus has been adaptable and flexible, which has enabled it to maintain its strength and vitality over the years. In 2011-12, Project Platypus's capacity to support Landcare groups and achieve on ground results is better than ever.

Project Platypus's mission is to support and empower the community to improve the environmental health of the Upper Wimmera River catchment while maintaining and improving productivity

Chairman's Report

The AGM for 2012 is fast approaching, and preparing this report is an opportunity to reflect on our activity over the past 12 months, and to take stock of what is possible in the coming year.

The celebration of '25 years of Landcare' in Victoria has provided the opportunity to document 'The Journey' of Project Platypus and the Upper Wimmera Catchment Landcare Groups. We are grateful for the support of DSE and WCMA with sponsorship, and to Jane Marriott and Landcare Group representatives for their knowledge and commitment to completing this publication. Thank you...

This History documents the valuable contribution of volunteers and staff devoting time and skills to achieve not only enhanced biodiversity in the Upper Wimmera Catchment, but also a strong and resilient community. I would like to acknowledge the value of all contributions, and thank those past and present for making this worthwhile investment of time and energy.

Colin Snooks is a name that comes to mind when we think of commitment to our environment and the Landcare community. Colin's involvement with Project Platypus goes back to Landholder, Member and Executive of Navarre and District Landcare Group, Management Committee Member, and then a change to join the Project Platypus staff to take on the challenge of weed control. Over the past year, he has filled the rabbit control facilitator position until his recent retirement. Of course, Landcare is in Colin's blood, and we look forward to his continued involvement in a voluntary role.

Our Strategic Plan 2012 – 2014 was finalised towards the end of 2011. This process has included a review of sub-committees, with the view to align these groups with projects, and involve members of the community to access a diversity of knowledge and skills. We continue to monitor the effectiveness of this initiative. We also welcome Perennial Pasture Systems as an affiliate member. We recognize the role productive perennial pastures play in sustainable farming systems, and look forward to working together for the benefit of our farming community.

None of what we achieve would be possible without the support of partners and sponsors. Building strong



relationships with these organisations is crucial to achieving effective outcomes for our region. Thanks to all our sponsors and partners for recognizing the power of working together, for your respect and support, and for your commitment to our environment and our community.

'Agrifest' was an outstanding day of sustainable farming workshops held at Overdale in March. Sessions on Carbon Basics, Women in Agriculture, Native Pastures and others proved thought provoking, and the day was smoothly coordinated by Bronwyn and the PP team. Other highlights of this year for me include involvement in Plantout. These

days are exceptionally well coordinated by David and the PP staff, and I enjoy getting to know other landcarers, connecting with nature and a great sense of achievement when the planting is done.

Other highlights for me include attending the Victorian Landcare conference celebrating '25 Years in Landcare in Victoria' at the MCG. Also Landcare Awards at Government House where Project Platypus received a 'Highly Commended' in the Landcare Network Category. A tour with Management Committee and Staff of the Upper Barwon Landcare Network, the Otway Agroforestry Group and the Bass Coast Landcare Network was also a great opportunity to learn and share experience.

I draw your attention to this annual report which lists current Management and Sub-Committee Members, Staff Members, Landcare Group Executives and Affiliate Members. Project Platypus is a vibrant landcare network because of the positive energy and commitment of these people. Our Manager, Leigh, has a unique skill of bringing all stakeholders together and empower individuals to achieve our mission in the Upper Wimmera Catchment. Thanks to all for the leadership you bring to our community, and I look forward to continuing our work together.



Leanne Jackman
Chairman



Project Platypus Management Committee

Project Platypus is governed by a volunteer Management Committee which meets on a monthly basis. The Management Committee is made up of Landcare Group representatives with a range of experience, skills and local knowledge which serves to guide the organisation's activities and provide strategic direction.

Management Committee Members (Sept 2011 - Sept 2012):

Chairman Leanne Jackman - Northern Grampians Landcare Group

Vice Chair Phil Hall - Concongella Landcare Group

Secretary Mark McKew - Crowlands Landcare Group

Treasurer Michael Greene - Elmhurst Landcare Group

Members:

Michael McMurtrie - Jallukar Landcare Group

Rosie Nater - Moyston Landcare Group

Alan Green - Great Western Landcare Group

Ian Nicholson - Stawell Urban Landcare Group

Steven Start - Crowlands Landcare Group

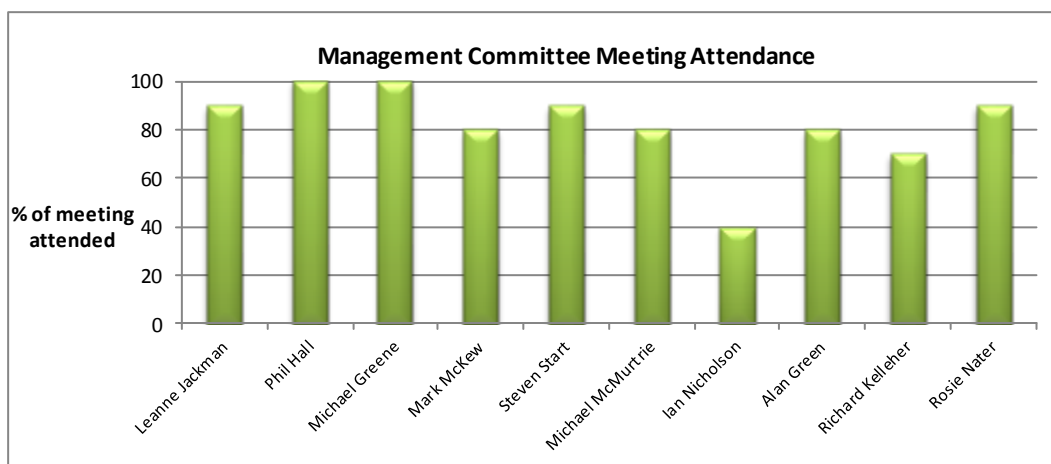
Richard Kelleher - Navarre Landcare Group

Ex officio members:

Nigel Binney - GWM Water

Joel Boyd - Wimmera Catchment Management Authority

Leigh Blackmore - Project Platypus (Manager)



Project Platypus Staff



Leigh Blackmore	Manager
David Margetson	Project Manager-Native vegetation
Colin Snooks	Project Officer
Allistair Stephens	Project Manager-Invasive Plants & Animals
Jane Marriott	Community Engagement Officer
Bob Wallace	Regional Landcare Facilitator & Landmate Coordinator
Bronwyn Bant	Events Coordinator
Barry Curtis	Accounts and Payroll Officer
Cathy McDermott	Administration Officer
Graham Pearson	Weed Control Supervisor
Dene Marshall	Weed Control Supervisor
Marcus Thomas	Weed Control Operator
Callum Nicholson	Weed Control Operator



Manager's Report

Thank you for your interest in Project Platypus and Landcare in the Upper Wimmera Catchment. It is great to be surrounded by so many enthusiastic people who care for the environment and the wellbeing of our community. It is at this time of year, the start of Spring, that reminds me why I love living here, cool crisp mornings, lots of new growth on the plants, wildflowers coming out, blue skies and plenty of sunshine.

In 2011/2012 much has been achieved here at Project Platypus, and this is only achieved by working in partnership with private and public land managers, the Wimmera CMA and other investors such as the State and Federal Government, philanthropic organisations and corporate support.

We have seen some staff changes this year with Allistair Stephens, Bronwyn Bant and Dene Marshall joining the Project Platypus team. Colin Snooks has moved into his retirement after many years working on various Landcare Projects, mainly focused around weed and rabbit control. His experience and expertise will be sorely missed and on behalf of the Landcare Community I wish him the very best.

Jane Marriott has moved away from the area during the last year and has been undertaking several tasks, mainly working from home. Jane is officially leaving Project Platypus after completing a documented history of Landcare in the Upper Wimmera. This has been a mammoth task and will help ensure the stories and learnings over the last 20 years are not lost. Jane will have been the longest serving staff member at Project Platypus, after 12 years, working across hundreds of projects and activities over this time. Jane's knowledge, skills and enthusiasm has helped shape Project Platypus and her contribution will not be forgotten. Jane will be focusing her energy closer to her new home, however we hope to continue working with Jane as opportunities arise.

Another Jane who has helped shape Project Platypus over the years has been Jane Williams. Jane was the inaugural Secretary for the group, helping to create a vision for the organisation, providing much of the enthusiasm and drive that helped kick start the organisation into action. Jane passed away in early November 2011, she will be sorely missed, but her legacy at Project Platypus will live on. Thanks Jane for your contribution and commitment to the community and the environment, you have been an inspiration for many.

The weed and rabbit control program at Project Platypus continues to grow each year with the last 12 months being no exception. To accommodate this growth and build our capacity to control weeds at the optimum time we invested in some additional resources. This included an additional ute with a slip on spray unit and a small boom. We had 2 teams



out for 4 or 5 days of the week most of the year with a dedicated staff member to manage the teams and their program. We also purchased a tablet with mapping software and GPS to assist in accurately recording control works or undertaking inspection work. This will help us keep track of weed infestations and increase our ability to evaluate the effectiveness of control programs. It has been great to see such a comprehensive program being undertaken with communication and support from the Local Landcare Groups, Wimmera Catchment Management Authority, Northern Grampians Shire, Ararat Rural City Shire, Parks Victoria and the Department of Primary Industries. I'd also like to make special mention of all those Landholders who undertake a huge amount of weed & rabbit control works on their properties,

sometimes with support of government funding, but also commonly with their own resources for the benefit of not only their own production, but for the benefit of their neighbours, their community and the protection of the natural environment. As is the case with most land management issues, weeds and rabbits can not be tackled in isolation.

The 2011 planting season saw the 4th year of the Grampians to Pyrenees Bio-link partnership project with the Wimmera CMA achieving some excellent results. With additional funding from the Federal Government and the Helen McPherson Smith Trust we have worked with 45 landholders planting over 70,000 plants, re-establishing or protecting 348 hectares of native vegetation. The success of this work is a combination of many people's enthusiasm and commitment to undertake this work and program manager, David Margetson has done another excellent job bringing all this together. A new model of Plantout was trialled this year, where 5 Local Landcare Groups hosting a day of planting each. This resulted in a community planting day each weekend in July, involving 230 volunteers. It is great to have the assistance of the local groups helping out to create a warm and friendly atmosphere for volunteers wanting to get involved and help out.



Manager's Report... continued

Our partnership with GWMWater has continued this year with the establishment of a new site in the Six Mile catchment and maintenance on existing works. In September, a 15 year partnership document was completed and a launch held which included a visit to past works sites. During this last year, with support from the Wimmera CMA, we have been able to undertake repair work of flood damaged erosion control structures.

After completing our Bandicoot Recovery Plan we have been successful in an application to the Federal Government to start implementing this plan. This work involves further Bandicoot surveys and fox control activities where any existing populations can be found. It seems

there is limited evidence of Bandicoots in the Upper Wimmera since the Deep Lead and Grampians Fires of 2005/2006.

The Farming in the 21st Century Series has now hosted its 5th year, with the major event "Agrifest" being another great success. With guest speaker, Jane Bunn, and many other quality speakers, locals were able to gather information and new ideas to help improve land management in the Upper Wimmera. It's great to be part of an activity working in partnership with the Northern Grampians, Ararat and Pyrenees Shires. Thanks again to the Holden Family for hosting the event and the William Buckland Foundation for their support.

Our AGM last year was another success with Alexandra Gartmann and Kate Auty sharing their insights into Landcare, Government and Philanthropy. It's great to have such a good representation from agencies and communities at this annual event, which helps demonstrate the value and support for Project Platypus and Landcare in the Upper Wimmera.

We have also been lucky enough to have representation from the Bass Coast Landcare Network come over and assist us in developing a Local Land Stewardship Program. This program is still in its infancy and we will continue to identify opportunities to integrate these concepts into our operations in the Upper Wimmera.



It has also been another big year for the Landmate Crews from the Ararat and Langi Kal Kal Prisons. It has been no problem finding valuable environmental work for these crews, with them regularly being booked out weeks in advance. The value of these teams is not always understood and we need to continue to articulate the achievements to decision makers to ensure the long term survival of this important program, now in its 21st year.

Our Regional Landcare Facilitator, Bob Wallace has again had a successful year, offering support to Landcare Groups in the Upper Wimmera. It has been good to see Landcare Groups looking widely for project funding with the Landsborough Landcare Group accessing funds through the Communities for Nature Program and

Crowlands Landcare receiving support from Gold Acres and the Pyrenees Shire Council. It's also great to see the State Government and the Wimmera CMA express their support for Landcare through the continuation of the Victorian Landcare Grants Program of which is widely accessed by the groups of the Upper Wimmera Catchment.

The year ahead, I'm sure will continue to offer opportunities and challenges, and Project Platypus will continue to adapt to this changing environment in order to achieve our mission. Some of the priorities for next year include a platypus and bandicoot monitoring program, minor erosion control works, the continuation of a collaborative approach to weed and rabbit control, more native vegetation protection and establishment and an increase in supporting locally based workshops, forums and events.

Let's all keep working together and looking towards the future. Thanks for your support.

Leigh Blackmore
Manager, Project Platypus

Landcare Group Highlights

Black Range

President: Peter Brazier

Secretary: Helen Rosenbaum

Black Range Landcare Group undertook extensive rabbit control works in the Black Range area by means of fumigating due to the inaccessibility and rocky terrain inhibiting heavy equipment. Some areas of the Black Range were sprayed for St Johns Wort. The group received funding to propagate understorey plants, these were planted in past revegetation sites.



Landsborough

President: Daryl Leslie
Secretary: Greg Dean

Landsborough Landcare Group has been successful with their application in the Communities for Nature grant. They have received funding to help absentee landholders address weeds in the Landsborough area. The group have taken an innovative approach by educating the public with weed I.D posters at the local shop and several community notice boards around the township. The group are hiring out the spray trailer and supplying chemicals for the landholders to use, Landholders can contribute with in kind labour. The purpose of the exercise is to make absentee landholders aware that they do have weeds on their property and there are resources available to them at very little cost. The Landsborough Landcare group have been spraying Gorse, Spiny Broom, St Johns Wort and Patterson's Curse in conjunction with the Ararat Landmate Crew.

Crowlands

President: Dennis Harrington
Secretary: Harold Thomas

The Crowlands Landcare Group have purchased a new spray trailer. The money for the new spray unit was raised with joint funding through several project partners, Gold Acres, Pyrenees Shire and the WCMA. The group undertook control work of Spiny Rush and Horehound. A total of 435 Hectares of ripping and fumigation work was completed by the Crowlands Landcare group and they coordinated fumigation work for the Landmate crew to undertake. Crowlands Landcare Group hosted 'Plantout, 2011' at the Thomas' and Malloy properties, approximately 6000 trees were planted.



Elmhurst

President: Doug Boatman

Secretary: Geoff Penna

Elmhurst Landcare Group have been diligently controlling rabbit populations in the Elmhurst area. They coordinated a successful baiting program involving local landholders, using 1080 baited carrots, with great success. The group held a 'bunny busters' forum, guest speakers were John Matthews (biosecurity officer for invasive animals), Brian Howlett (DPI) and Neil Harrison (DPI chemical standards officer.) The group also held an information session in relation to the Pigs in Mt Cole. Guest speakers were John Searby from the DSE and Daryl Panther a local pest animal contractor, who spoke about the challenges involved. The group are trialling a trap as well as bait stations specifically designed for pigs.



Landcare Group Highlights

Concongella



President: Malcolm Nicholson

Secretary: Phil & Trudy Hall

Concongella Landcare Group have had a busy year, Flood recovery work has slowed Landcare activities, however the group have been able to complete control works for Cape Tulip, Horehound, Patterson's Curse and Sweet Briar. Concongella Landcare group had been controlling rabbit populations earlier in the financial year through ripping and fumigation work.

Navarre

President: Shane Bibby

Secretary: R & L Kelleher

The Navarre Landcare Group have been spraying Patterson's Curse and completed Rabbit harbour destruction. The group provided support to Project Platypus for the Heifer Station Creek walk.



Northern Grampians

President: Ray Graham

Secretary: Judy Dunkley

Northern Grampians Landcare Group have undertaken rabbit harbour destruction, with follow up fumigation work along the Mt William creek. They carried out Bridal Creeper control in the Northern Grampians Landcare Group area.



The group have made final touches to their brochure for the Mt William Creek nature trail, in Dadswells Bridge. The Northern Grampians Landcare Group hosted a successful Plantout at the Dunkley, Arnts and Jess' properties, where approximately 5000 trees were planted for the day.

Stawell Urban:

President: Ian Nicholson

Secretary: Catherine McDermott

Stawell Urban Landcare have had another productive year with the Big Hill Weed Action Plan. A series of working bees in autumn and spring complemented funding from the Victorian Landcare Grants for herbicide, to combat woody weeds and boneseed on Big Hill. The Ironbarks walks with local primary school students in spring continues to be coordinated and supported by members of the Landcare group. The group has built capability by coordinating a chainsaw accreditation course and media writing workshops for members and others. The walking track at Moonlight Sands is still on the agenda, a plan for signs has been undertaken, the group are also looking at funding options in the hope of coordinating a Nest Box Program.



Members from Stawell Urban donated their time to support one of the Project Platypus Plantout events, the group coordinated the catering for thirty or so volunteers, who were very happy with the smiling faces and good food provided throughout the day.

Stawell Urban Landcare Group continues to meet on the second Tuesday of each month and it is encouraging to see new faces attending the meetings. The group continue to advertise and promote their projects in the hope of raising public awareness and attracting new members.

Landcare Group Highlights

Moyston

President: Adam Merrick

Secretary: Rosie Nater

The Moyston Landcare Group have been working in partnership with Project Platypus, and the Wimmera CMA to control Chilean Needle Grass in the area. The Moyston Landcare Group held an information seminar about the Chilean Needle Grass problem. Mapping has been completed in anticipation of weed emergence, the group hope to start work on private land later in the year. Moyston Landcare Group have also been working on projects around the Moyston township, the Group completed work on the Moyston Common Mine and Nature Walking track, trees were planted by the Moyston Primary School, Landmate crews were used to clear and maintain the track as well as build a creek crossing and spread road base on the track. Moyston Landcare Group continued work on weeds and rabbits along roadsides in partnership with the Ararat Rural City Council.



Jallukar

President: Terry May

Secretary: Fred Rich



Jallukar Landcare Group have had several social and informative meetings during the year. These have included several guest speakers, Neil Macumber discussing Grampians wildlife and fungi expert Bruce Fuhrer. The group went on a tour of the Banfield's property, as well as a tour of the Landfill site run by State wide recycling, in response to issues at the site, that were raised by the group. The Jallukar Landcare group undertook several working bees at the Miller Creek Reserve in Pomonal, they removed the old BBQ, installed two picnic tables and chairs, sprayed weeds, planted trees and spread mulch around the picnic area. 25 volunteers planted 6000 trees at the Benfield's for the Plantout event hosted by Jallukar Landcare Group. The group were involved in the control of Arum Lilly, English Ivy and Cape Tulip. Rabbit harbour work was carried out earlier in the year.

Great Western

President: Mark Kindred

Secretary: Paul Dakis

Great Western Landcare Group have had another productive year with work focused on pest plant and animal works in their Landcare area. With funding from the Victorian Landcare Grants, the group undertook an extensive rabbit control program, destroying warrens and removing Spiny Rush. The group has been carrying on with weeds in the area with special attention to Patterson's Curse and Horehound, they are continuing to carry on this work with assistance from Project Platypus. The group met earlier in the year and went on a native grasses and wildflower walk, followed by a BBQ at Seppelt's Vineyard. The group has once again been involved with 'Plantout' this year at the Kilpatrick's property. The day was an overall success and the Great Western Landcare Group did a magnificent job hosting the dinner and providing entertainment on the Saturday night.



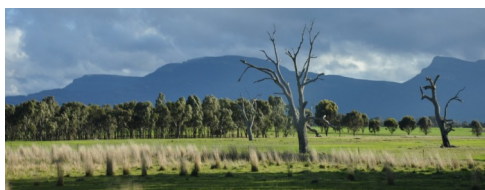
2011-2012 Achievements

Protecting and Establishing Native Vegetation

Project	Partners	Achievements
Woodlands Revival	<ul style="list-style-type: none"> Department of Agriculture Forestry and Fisheries (Federal Government) 	<ul style="list-style-type: none"> 17.2 ha revegetated 1.7 ha remnant protected 4.9 km fencing constructed 6,660 stems planted 8 landholders involved
Grampians to Pyrenees Biolink 2011	<ul style="list-style-type: none"> Wimmera Catchment Management Authority Department of Sustainability and the Environment (Victorian Government) 	<ul style="list-style-type: none"> 99.9 ha revegetated 220.1 ha remnant protected 59,200 stems planted 48.5 km fencing constructed 31 landholders involved
Living Landscapes	<ul style="list-style-type: none"> Helen McPherson Smith Trust 	<ul style="list-style-type: none"> 9.4 ha revegetated 1,840 m fencing constructed 4,990 stems planted 5 Landholders involved
Navarre Minerals	<ul style="list-style-type: none"> White Gums Environmental Consultancy 	<ul style="list-style-type: none"> 1 Vegetation Assessment undertaken

Improving Water Quality

Project	Partners	Achievements
Improving Water Quality in the Wimmera River	<ul style="list-style-type: none"> GWMWater 	<ul style="list-style-type: none"> 1 new site established (Six Mile Catchment) Maintenance work undertaken at 4 sites Publication launch and tour of works undertaken 1 new site designed (Iron Pot Creek)
Flood Damage repairs	<ul style="list-style-type: none"> Wimmera Catchment Management Authority Department of Sustainability and the Environment (Victorian Government) 	<ul style="list-style-type: none"> Flood damaged erosion control work repairs at 5 sites



Protecting Native Fauna

Project	Partners	Achievements
Bandicoot Protection	<ul style="list-style-type: none"> Department of Agriculture Forestry and Fisheries (Federal Government) 	<ul style="list-style-type: none"> Fox Control Plan Cat and Dog Control Plan Bandicoot friendly weed & rabbit control fact sheets Demonstration site established (re-creating habitat)

2011-2012 Achievements

Controlling Invasive Plants and Animals

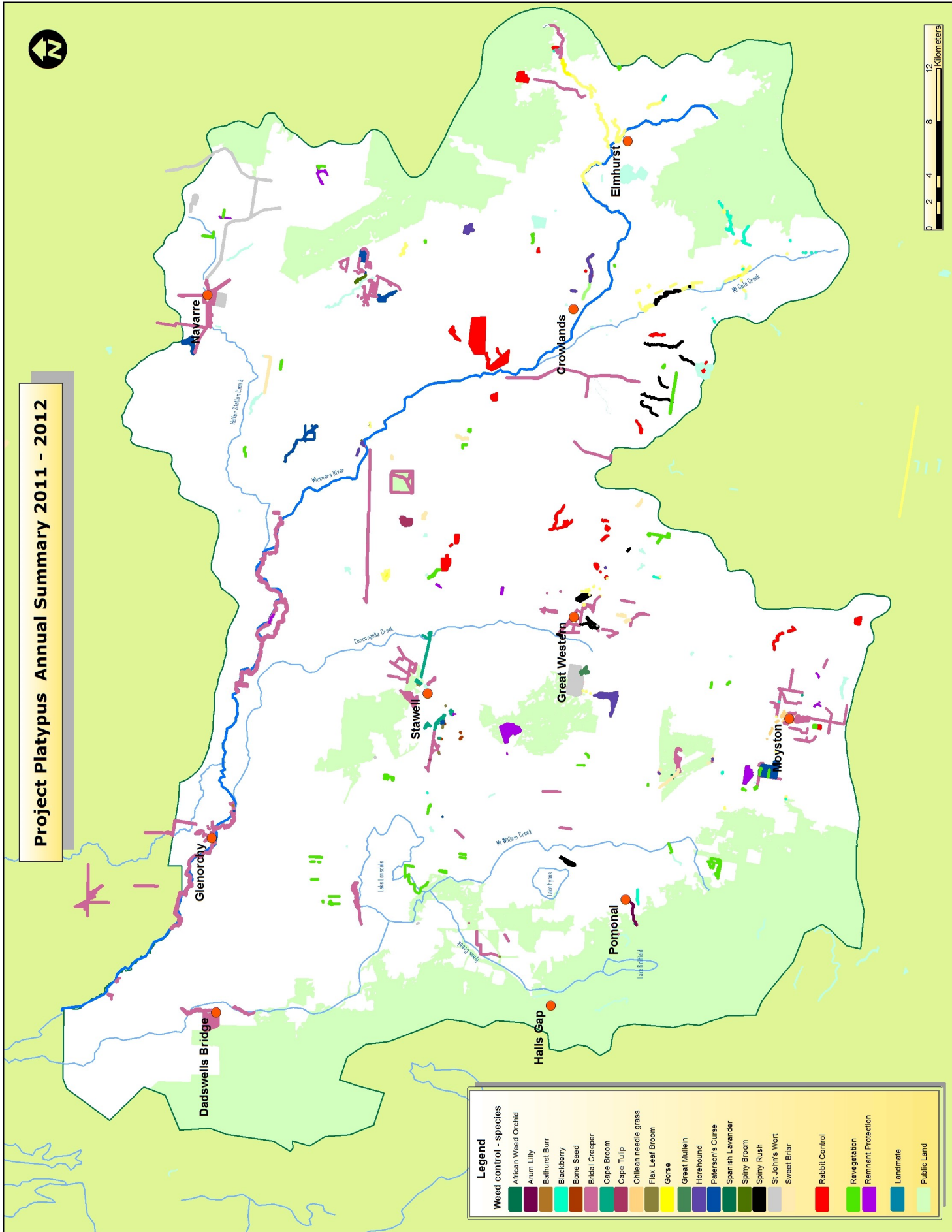
Project	Partners	Achievements
Concongella Landcare Weeds	<ul style="list-style-type: none"> Wimmera Catchment Management Authority Department of Sustainability and the Environment (Victorian Government) Concongella Landcare Group 	<ul style="list-style-type: none"> 43.8 ha Cape Tulip 2.4 ha Horehound 16.8 ha Paterson's Curse 19.8 ha Sweet Briar
Crowlands Landcare Rabbit Harbour Control	<ul style="list-style-type: none"> Wimmera Catchment Management Authority Department of Sustainability and the Environment (Victorian Government) Crowlands Landcare Group 	<ul style="list-style-type: none"> 47.4 ha Spiny Rush 2.7 ha Horehound
Gorse Control	<ul style="list-style-type: none"> Gorse taskforce, Department of Primary Industries (Victorian Government) Local government 	<ul style="list-style-type: none"> 10ha Gorse
Great Western Landcare Weeds	<ul style="list-style-type: none"> Wimmera Catchment Management Authority Department of Sustainability and the Environment (Victorian Government) Great Western Landcare Group 	<ul style="list-style-type: none"> 14.8 ha Great Mullien .1 ha Horehound 51.4 ha Spiny Rush 4.1 ha Sweet Briar
Jallukar Landcare Weeds	<ul style="list-style-type: none"> Wimmera Catchment Management Authority Department of Sustainability and the Environment (Victorian Government) Jallukar Landcare group 	<ul style="list-style-type: none"> .5 ha Cape Tulip
Landsborough Landcare Weeds	<ul style="list-style-type: none"> Wimmera Catchment Management Authority Department of Sustainability and the Environment (Victorian Government) Landsborough Landcare Group 	<ul style="list-style-type: none"> 74.7 ha Paterson's Curse
Millers Creek	<ul style="list-style-type: none"> Wimmera Catchment Management Authority Department of Sustainability and the Environment (Victorian Government) Parks Victoria, Jallukar Landcare group 	<ul style="list-style-type: none"> 3.1 ha Arum Lilly .03 ha English Ivy
Moyston Landcare Weeds	<ul style="list-style-type: none"> Wimmera Catchment Management Authority Department of Sustainability and the Environment (Victorian Government) Moyston Landcare Group 	<ul style="list-style-type: none"> 121 ha Paterson's Curse
Navarre Landcare Weeds	<ul style="list-style-type: none"> Wimmera Catchment Management Authority Department of Sustainability and the Environment (Victorian Government) Navarre Landcare Group 	<ul style="list-style-type: none"> 39.4 ha Paterson's Curse
Parks Vic Invasive Species	<ul style="list-style-type: none"> Parks Victoria, 	<ul style="list-style-type: none"> 3.4 ha Spanish Lavender .3 ha Horehound 10.6 ha Sweet Briar
Victorian Landcare Grant	<ul style="list-style-type: none"> Wimmera Catchment Management Authority Department of Sustainability and the Environment (Victorian Government) 	<ul style="list-style-type: none"> 32 ha Cape and Flax leaf broom 207.4 ha St John's wort
Weeds of National Significance - Wimmera CMA	<ul style="list-style-type: none"> Wimmera Catchment Management Authority Department of Agriculture Forestry and Fisheries (Federal Government) 	<ul style="list-style-type: none"> 17.9 ha Blackberry 17.9 ha Bone seed 1598 ha Bridal Creeper 3.4 ha Chilean Needle grass 131.7 ha Gorse
Wimmera Catchment Management Authority Flood Recovery Weeds	<ul style="list-style-type: none"> Wimmera Catchment Management Authority Department of Sustainability and the Environment (Victorian Government) Various Landcare Groups 	<ul style="list-style-type: none"> .02 ha AfricanBox Thorn 18.2 ha Cape and Flax Leaf broom 178.3 ha Horehound .02 ha CapeTulip 23.6 ha Spiny Rush 251.9 ha St John's wort 37.3 ha Sweet Briar 4.7 ha Spiny Broom

2011-2012 Achievements

Engaging and Involving the Community

Project	Partners	Achievements
Regional Landcare Facilitator	<ul style="list-style-type: none"> Department of Agriculture Forestry and Fisheries (Federal Government) Kowree Farm Tree Group Hindmarsh Landcare Network 	<ul style="list-style-type: none"> 25 Landcare Group meetings and events attended 10 NRM & grant updates provided 11 Landcare Groups supported Assisted groups with brochure development, hosting events such as working bees and guest speakers, developing media releases, signage and general promotion.
Agrifest	<ul style="list-style-type: none"> William Buckland Foundation, Ararat Rural City Council Northern Grampians Shire Council Pyrenees Shire Council The Holden Family (Overdale) 	<ul style="list-style-type: none"> 105 Farmers and interested people attended 12 High Calibre Speakers 19 exhibitors
Plantout 2011	<ul style="list-style-type: none"> SP Ausnet Wimmera Catchment Management Authority Department of Agriculture Forestry and Fisheries (Federal Government) Jallukar Landcare Group Concongella Landcare Group Crowlands Landcare Northern Grampians Landcare Group Great Western Landcare Group 	<ul style="list-style-type: none"> 7 school group plantings 5 Landcare group plantings 230 volunteers involved
2011 Project Platypus AGM	<ul style="list-style-type: none"> Wimmera Catchment Management Authority Department of Sustainability and the Environment (Victorian Government) 	<ul style="list-style-type: none"> 82 Project Platypus Supporters attended the AGM with Guest Speaker Alexandra Gartmann discussing Birchip Cropping Group, Australian Landcare Council and FRRR
Land Stewardship Replication Trial	<ul style="list-style-type: none"> Bass Coast Landcare Network Department of Sustainability and the Environment (Victorian Government) 	<ul style="list-style-type: none"> 4 workshops held 1 Plan developed
Landmate Coordination	<ul style="list-style-type: none"> Corrections Victoria Glenelg Hopkins CMA Department of Sustainability and the Environment (Victorian Government) 	<ul style="list-style-type: none"> 343 ha fenced and revegetated Fencing to protect 8.2 ha of remnant vegetation 27.1 ha weed control 378 ha of rabbit warren fumigation 13 ha of landclass fencing 11 community groups supported 37 days of flood recovery 13.4 ha protected from predators 18 Parks Victoria walking tracks and other infrastructure works <p>Note: some of these achievements may have also been recorded elsewhere</p>
Work Experience Programs	<ul style="list-style-type: none"> Western District Employment Access Community Axis 	<ul style="list-style-type: none"> 26 week work experience placements for 2 participants
Upper Wimmera Landcare History	<ul style="list-style-type: none"> Wimmera Catchment Management Authority Department of Sustainability and the Environment (Victorian Government) 	<ul style="list-style-type: none"> Upper Wimmera Landcare History document commenced
CFI Communications Program	<ul style="list-style-type: none"> Kowree Farm Tree Group Hindmarsh Landcare Network Department of Agriculture Forestry and Fisheries (Federal Government) 	<ul style="list-style-type: none"> 3 Carbon Farming Initiative related events

Project Platypus Annual Summary 2011 - 2012





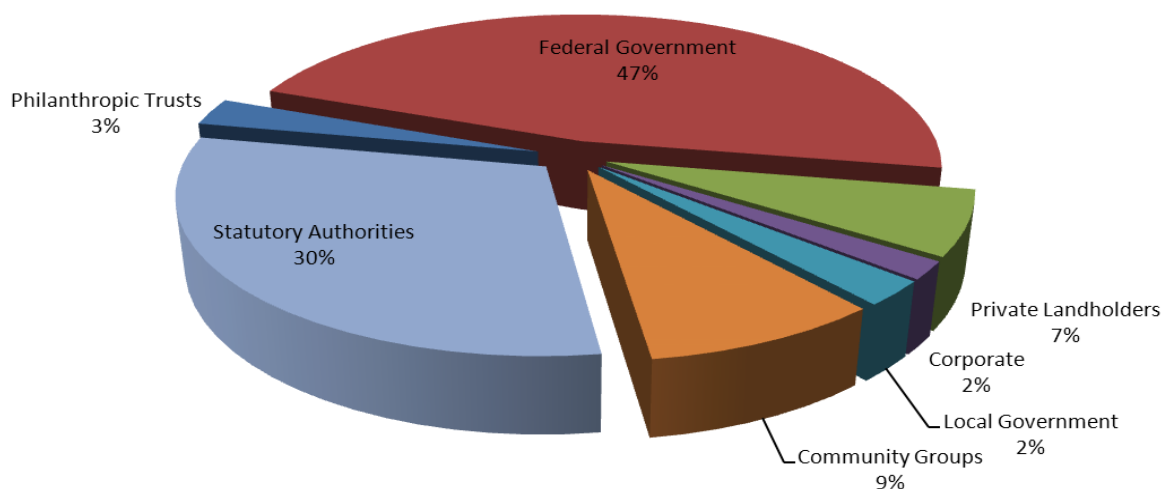
Financial Reports

OPERATING STATEMENT FOR THE YEAR ENDED 30 JUNE 2012

Note	2012 \$	2011 \$
Revenue		
Fee for Service	294,840	176,209
Grants Received	584,185	719,264
Negotiated Contracts	150,333	
Sponsorship	35,000	
Interest received	14,375	4,158
Sundry income	29,616	15,458
Total Revenue	1,108,349	915,089
Expenses		
Administration	53,306	46,207
Community engagement	47,337	74,485
Employment	435,164	315,815
Staff development		7,661
Vehicles	47,270	32,479
Operational Costs	350,925	215,531
Total Expenses	934,002	692,178
Net Surplus/(Deficit)	\$174,346	\$222,911

The accompanying notes form part of these financial statements.

Income Sources



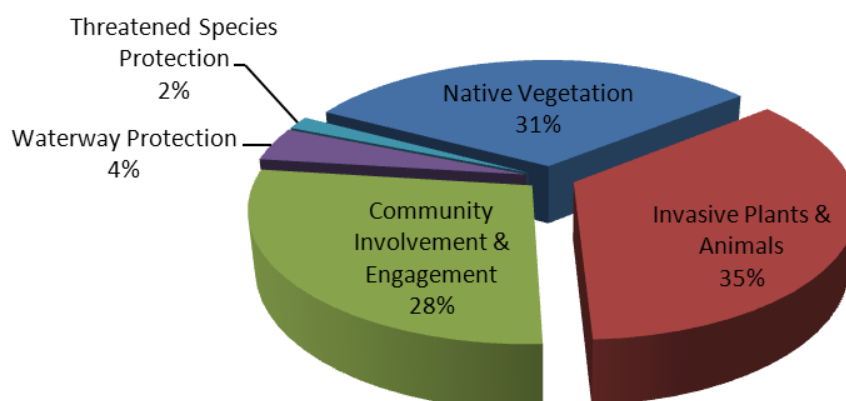
Financial Reports

BALANCE SHEET FOR THE YEAR ENDED 30 JUNE 2012

	Note	2012 \$	2011 \$
Current Assets			
Cash and Cash Equivalents	2	481,491	339,350
Receivables	3	69,376	129,371
Total Current Assets		<u>550,867</u>	<u>468,721</u>
Non-Current Assets			
Vehicles and Equipment	4	134,605	88,555
Total Non-Current Assets		<u>134,605</u>	<u>88,555</u>
Total Assets		<u>685,471</u>	<u>557,276</u>
Current Liabilities			
Payables	5	61,326	110,362
Provisions	6	7,451	11,250
Total Current Liabilities		<u>68,777</u>	<u>121,612</u>
Non-Current Liabilities			
Payables	7	13,697	7,013
Total Non-Current Liabilities		<u>13,697</u>	<u>7,013</u>
Total Liabilities		<u>82,474</u>	<u>128,625</u>
Net Assets		<u>\$602,998</u>	<u>\$428,651</u>
Accumulated Funds	8	\$602,998	\$428,651

The accompanying notes form part of these financial statements.

Expenditure Profile



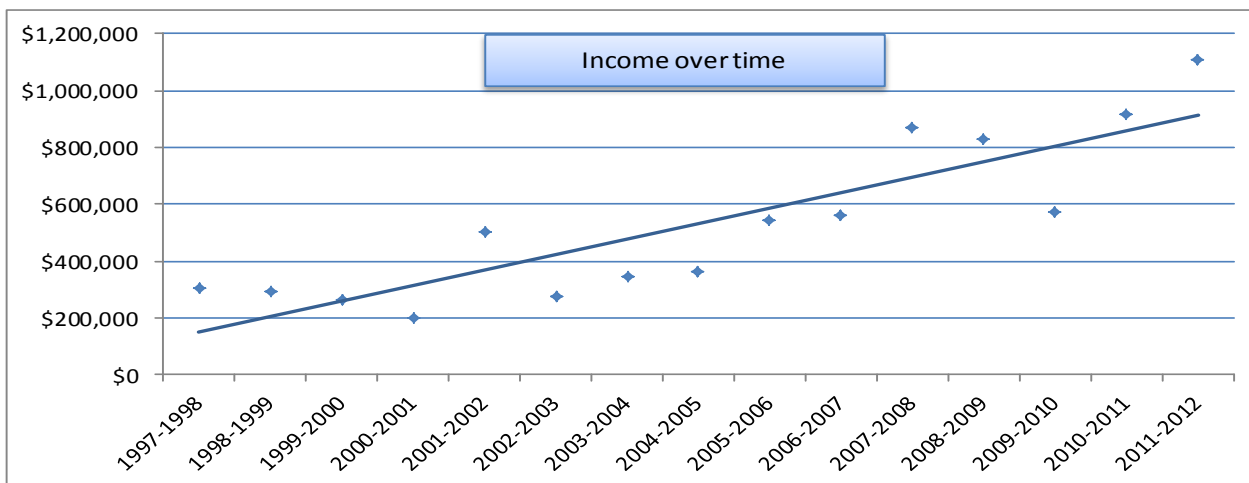


Financial Reports

CASH FLOW STATEMENT FOR THE YEAR ENDED 30 JUNE 2012

	Note	2012 \$	2011 \$
Cash flows from operating activities			
Cash received from customers		1,148,313	962,322
Cash paid to suppliers, grant recipients and employees		(963,170)	(647,288)
Net cash provided/(used) by operating activities	9	<u>185,143</u>	<u>315,034</u>
Cash flows from investing activities			
Interest received		14,375	4,158
Proceeds from the sale of vehicles and equipment		12,273	0
Payments for vehicles and equipment		(74,922)	(1,177)
Net cash provided/(used) in investing activities		<u>(48,274)</u>	<u>2,981</u>
Cash flows from financing activities			
Cash received from finance agencies		16,224	0
Cash paid to finance agencies		(10,951)	(23,318)
Net cash used in financing activities		<u>5,273</u>	<u>(23,318)</u>
Net Increase/(Decrease) in cash held		142,141	294,697
Cash and cash equivalents at beginning of the financial Year		<u>339,350</u>	<u>44,654</u>
Cash and cash equivalents at the end of the financial year		<u>\$481,491</u>	<u>\$339,350</u>

The accompanying notes form part of these financial statements.



Financial Reports

PROJECT PLATYPUS ASSOCIATION INCORPORATED

Note 1. Summary of significant accounting policies

This report is a general purpose financial report representing Project Platypus Association Inc. as an individual entity.

Project Platypus Association Inc. is an association incorporated in Victoria Australia under the Associations Incorporations Act (1981) Vic.

[a] Basis of preparation

This financial report has been prepared on an accrual and going concern basis using the Historical Cost convention except where specifically stated and all accounting policies comply with Australian Accounting Standards include Australian equivalents to International Financial Reporting Standards.

All accounting policies applied are consistent with those used in the prior year.

[b] Revenue

In accordance with changes to the Accounting Standard AASB 1004, revenue from grants is recognised in the year in which the grant funds are received, irrespective of the period the funds relate to.

Consideration has been given to provision for Bad and Doubtful Debts at balance date. No such provision was necessary.

[c] Employee benefits

Liabilities for services rendered by employees are recognised at balance date to the extent that they have not been settled. Liability for annual leave and long service leave were considered.

[d] Cash and Cash Equivalents

This item includes cash on hand, deposits held at-call with banks and other short term highly liquid investments with original maturities of twelve months or less.

[e] Vehicles and equipment

These items with a value in excess of \$1000 and a useful life in excess of one year are capitalised at cost and amortised in equal instalments over their useful life.

When an asset is disposed of and the amount received is greater than the written down value of the item a gain is recognised as Revenue. Alternatively, if the disposal value is less than written down value the 'loss' is expensed.

Financial Reports

PROJECT PLATYPUS ASSOCIATION INCORPORATED

	2012 \$	2011 \$
Note 2. Cash and Cash Equivalents		
Greenhouse Gas Project Account	8	8
Investment Account	276,819	283,569
Operating Account	114,503	55,144
Petty Cash Advance	300	300
Public Fund Account	89,860	329
Undeposited Funds		
	<u>\$481,491</u>	<u>\$339,350</u>
Note 3. Receivables		
Income receivable from Fee for Service customers	64,621	63,371
Income receivable from Grants	0	66,000
Income receivable for Employee Reimbursements & Incentives	4,755	
	<u>\$69,376</u>	<u>\$129,371</u>
Note 4. Vehicles and Equipment		
Motor Vehicles	141,193	117,551
Less accumulated depreciation	(43,730)	(52,600)
Office Equipment & Furniture	5,172	5,172
Less accumulated depreciation	(2,837)	(2,183)
Works Equipment	48,900	30,121
Less accumulated depreciation	(14,093)	(9,505)
	<u>\$134,605</u>	<u>\$88,556</u>
Note 5. Payables [Current Liabilities]		
Credit Card	479	247
Accounts Payable	11,264	58,715
GST Liabilities	20,777	21,126
Payroll Liabilities	28,807	30,274
	<u>\$61,326</u>	<u>\$110,362</u>
Note 6. Provisions		
Annual Leave and Long Service Leave	\$7,451	\$11,250
Note 7. Payables [Non-current Liabilities]		
Toyota Finance [Corolla]	0	2,686
Less Unexpired Charges	0	(391)
	<u>0</u>	<u>2,295</u>
Toyota Finance [Colorado]	724	5,068
Less Unexpired Charges	26	(350)
	<u>750</u>	<u>4,718</u>
PowerTorque Finance [Isuzu]	14,342	0
Less Unexpired Charges	(1,395)	0
	<u>12,947</u>	<u>0</u>
Total Non-current liabilities	<u>\$13,697</u>	<u>\$7,013</u>

Financial Reports

PROJECT PLATYPUS ASSOCIATION INCORPORATED

	2012 \$	2011 \$
Note 8. Accumulated Funds		
Committed Funds Reserve		
Reserve funds are legal obligations owed for committed projects.		
At balance date obligations existed in the following projects:		
Dept of Agriculture Fisheries & Forestry [Fox Project]	27,732	
Dept of Agriculture Fisheries & Forestry [Stream Bank Protection]	10,064	19,750
Dept of Agriculture Fisheries & Forestry [Woodlands Revival]	332,451	235,290
GWMWater	19,657	5,806
Helen McPherson Smith Foundation [Living Landscapes]	5,688	17,593
Jallukar Landcare Group [Miller's Creek]	2,561	
Moyston Landcare Group [Weed Control]	1,740	
Northern Grampians Shire Council [Rabbit Control]	764	
Victorian Gorse Taskforce [Gorse Control]		10,786
William Buckland Foundation [Farming in the 21st Century]	4,909	9,298
Wimmera Catchment Mmt Authority [Grampians to Pyrenees Bi- olink]		22,660
Wimmera Catchment Mmt Authority [History Document]	20,168	
	425,734	298,523
Balance of funds not committed to projects	177,264	130,128
	<u>\$602,998</u>	<u>\$428,651</u>
Note 9. Reconciliation of Operating Activities		
Net result for the year	\$174,346	\$222,911
Non cash flows in result:		
Depreciation	22,255	16,800
Profit on Disposal of Non-current Assets	(5,656)	0
Expired Finance Charges	1,411	1,439
Non-cash movement in Assets & Liabilities:		
Movement in Payables	(49,035)	34,630
Movement in Provisions	(3,799)	(7,980)
Movement in Receivables	59,995	51,391
Transfer to Investing Activities:		
Interest Received	(14,375)	(4,158)
	<u>\$185,142</u>	<u>\$315,034</u>
Net cash flow available from operating activities		



Audited Financial Statement

SALLY HINCHLIFFE
& ASSOCIATES

CERTIFIED PRACTISING ACCOUNTANTS
ABN 58 121 794 045

INDEPENDENT AUDIT REPORT TO THE MEMBERS OF PROJECT PLATYPUS ASSOCIATION INC.

Scope

We have audited the financial report of Project Platypus Association Inc for the year ended 30th June, 2012. The Committee is responsible for the financial report. We have conducted an independent audit of the financial report in order to express an opinion on it to the members.

Our audit has been conducted in accordance with Australian Auditing Standards to provide reasonable assurance whether the financial report is free of material misstatement. Our procedures included examination, on a test basis, of evidence supporting the amounts and other disclosures in the financial report, and the evaluation of accounting policies and significant accounting estimates. These procedures have been undertaken to form an opinion whether, in all material respects, the financial report is presented fairly in accordance with Accounting Standards and other mandatory professional reporting requirements in Australia so as to present a view which is consistent with our understanding of the association's financial position and performance as represented by the results of its operations and its cash flows.

The audit opinion expressed in the report has been formed on the above basis.

Audit Opinion

In our opinion, the financial report of Project Platypus Association Inc. presents a true and fair view in accordance with applicable Accounting Standards and other mandatory professional reporting requirements in Australia the financial position of Project Platypus Association Inc. as at 30th June, 2012, and the results of its operations and its cash flows for the year then ended.

SALLY HINCHLIFFE & ASSOCIATES PTY. LTD.

Date: 14th September, 2012

SALLY HINCHLIFFE & ASSOCIATES

Liability limited by a
scheme approved under
Professional Standards
Legislation

210 BARKLY STREET
ARARAT, VICTORIA 3377

TELEPHONE: (03) 5352 5144
FACSIMILE: (03) 5352 5151
EMAIL: office@shararat.com.au